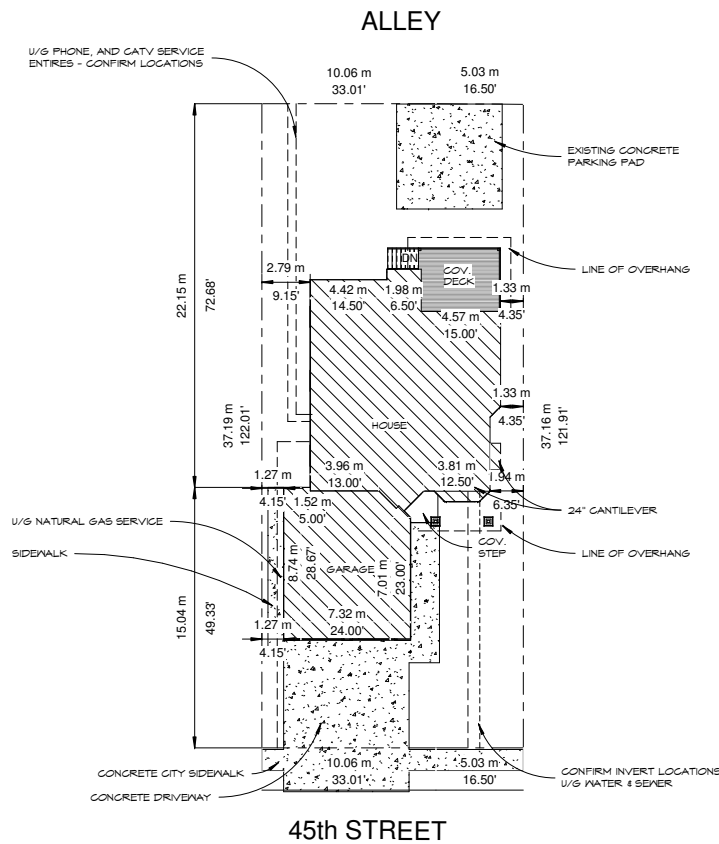


4730 45th STREET LLOYDMINSTER, SASKATCHEWAN



Site Plan

SCALE: 1:200 (METRIC)

LEGAL DESCRIPTION

LOT - WT32-33
BLOCK - 15
PLAN - B 1121

4730 45th STREET
LLOYDMINSTER, SASKATCHEWAN

SITE AREA = 561.12sq.m. (6,034.85sq.ft.)

BUILDING AREA
TOTAL COVERAGE (INCLUDED COV. DECK
& COV. STEP) = 38.1% (ALLOWED 40%)
214.28sq.m. (2,306sq.ft.)

LIMITING DISTANCE CALCULATION
HOUSE WEST WALL AREA = 51.97M²
UNPROTECTED OPENINGS AREA = 4.91M²
LIMITING DISTANCE = 2.79M
% EXPOSING BUILDING FACE AREA = 8.4%
ALLOWED = 11%

GARAGE WEST WALL AREA = 21.91M²
UNPROTECTED OPENINGS AREA = 1.99M²
LIMITING DISTANCE = 1.27M
% EXPOSING BUILDING FACE AREA = 4.7%
ALLOWED = 7%

LIMITING DISTANCE CALCULATION
EAST WALL AREA = 26.01M²
UNPROTECTED OPENINGS AREA = 1.99M²
LIMITING DISTANCE = 1.93M/1.94M
% EXPOSING BUILDING FACE AREA = 7.6%
ALLOWED = 8%

1 Site Plan
1:200

RSI Calculation - NBC 2015 Part 9.36 - Homesense Builders
Zone 7a with HRV
HDD 5,880
Lloydminster, SK

Walls Above Grade - 2x6

Assembly Components	RSI (m ² -K)/W	
Exterior Air Film	0.03	
Lamina	0.00	
Vinyl Siding	0.11	
Tyvek Air Barrier	0.00	
3/8" Plywood Sheathing	0.08	
	RSI Through Stud	RSI Through Cavity
Framing percentages (wood stud @ 400mm)	23	77
Wood Studs 2x6 (140mm x .0085 RSI/mm)	1.19	
Batt Insulation (R22)		3.87
Vapour Barrier	0.00	
1/2" Gypsum Board	0.08	
Interior Air Film	0.12	
Effective RSI	2.97	
Effective U (1/RSI)	0.34	
	Required	2.97

Ceilings Below Attic

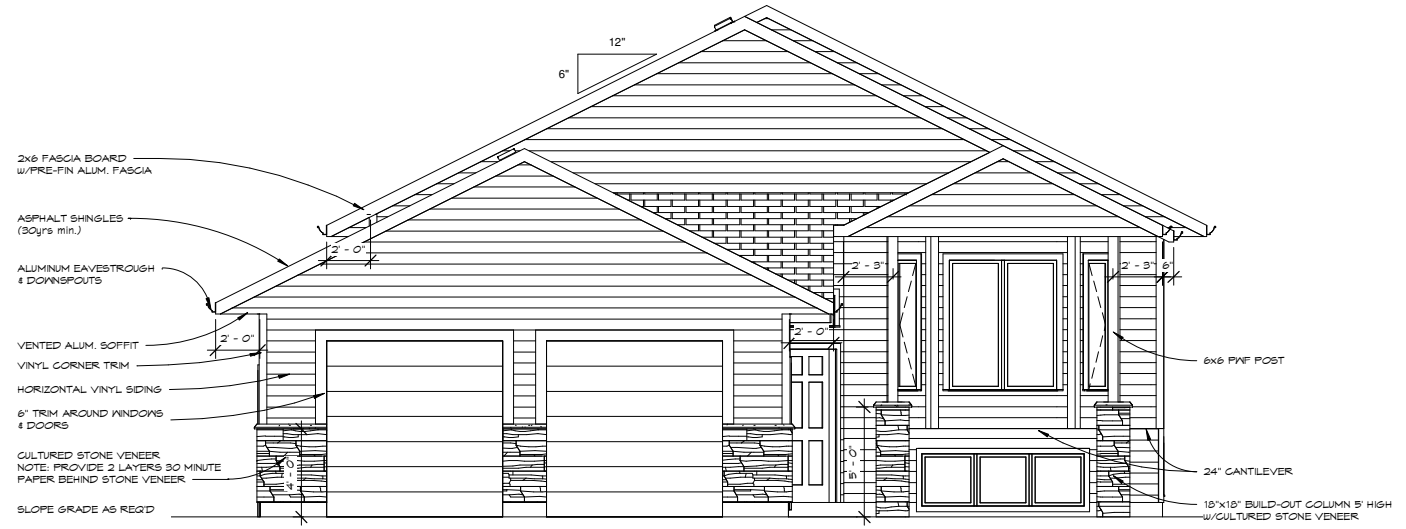
Assembly Components	RSI (m ² -K)/W	
Roof Air Space	0.03	
11.5" Cellulose Insulation Above	7.30	
	RSI Through Trusses	RSI Through Cavity
Framing percentages (wood trusses @ 600mm)	11	89
Wood Trusses 2x4 (89mm x .0085 RSI/mm)	0.7565	
3 1/2" Cellulose Insulation		2.225
Vapour Barrier	0.00	
1/2" Gypsum Board	0.08	
Interior Air Film	0.12	
Effective RSI	9.36	
Effective U (1/RSI)	0.11	
	Required	8.67

Walls Below Grade - 2x8

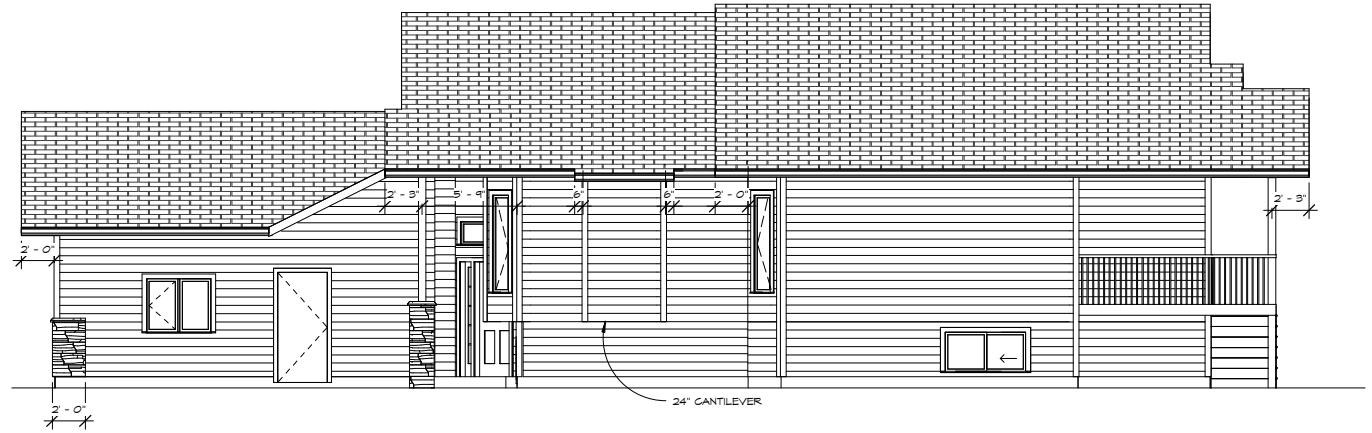
Assembly Components	RSI (m ² -K)/W	
Exterior Air Film	0.00	
Lamina	0.00	
Tyvek Air Barrier	0.00	
5/8" Plywood Sheathing	0.11	
	RSI Through Stud	RSI Through Cavity
Framing percentages (wood stud @ 300mm)	24.5	75.5
Wood Studs 2x8 (200mm x .0085 RSI/mm)	1.564	
Batt Insulation (R28)		4.93
Vapour Barrier	0.00	
1/2" Gypsum Board	0.10	
Interior Air Film	0.12	
Effective RSI	3.55	
Effective U (1/RSI)	0.28	
	Required	2.98

Unheated Floors above Frost Line

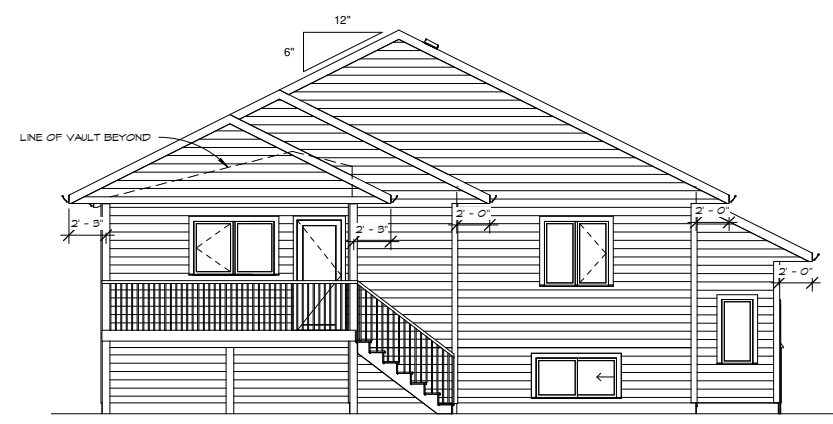
Assembly Components	RSI (m ² -K)/W	
Interior Air Film	0.16	
2" Concrete Slab	0.02	
2" Extruded Polystyrene (4ft in from the perimeter)	1.78	
Effective RSI	1.96	
Effective U (1/RSI)	0.51	
	Required	1.96



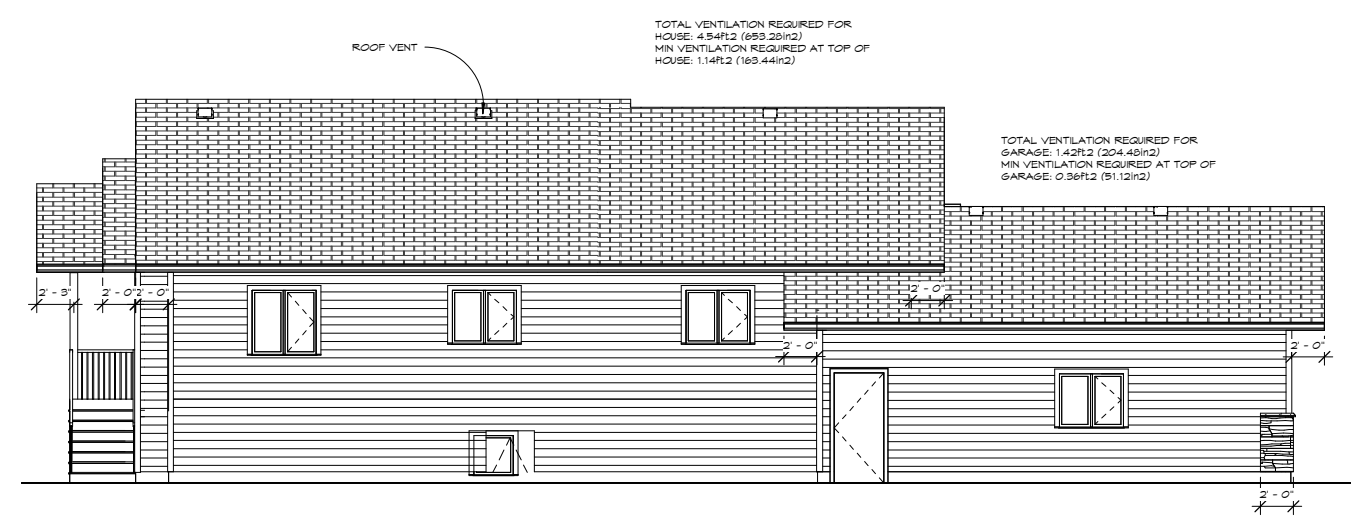
1 **Front Elevation**
1/4" = 1'-0"



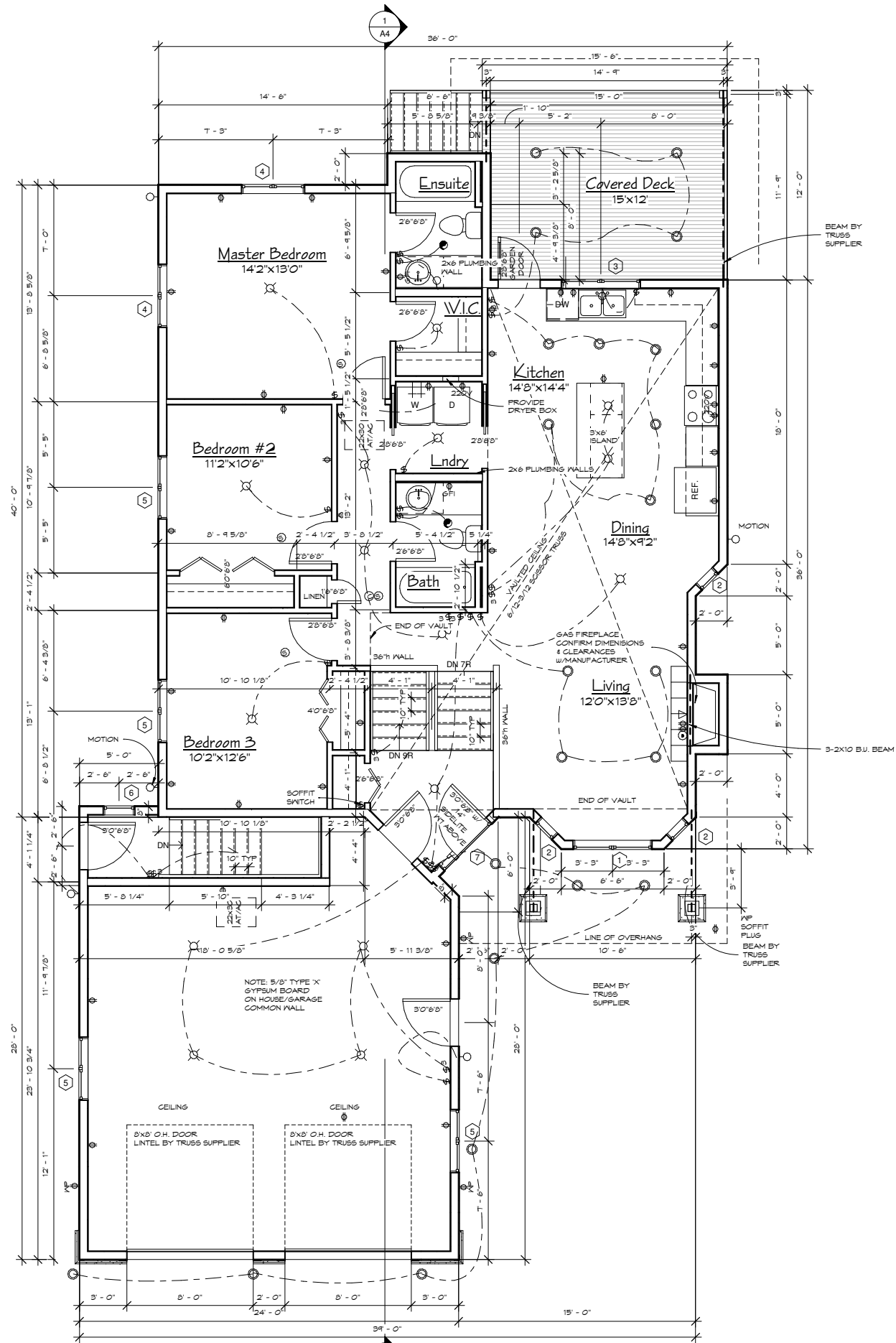
2 **Right Elevation**
3/16" = 1'-0"



3 **Rear Elevation**
3/16" = 1'-0"



4 **Left Elevation**
3/16" = 1'-0"



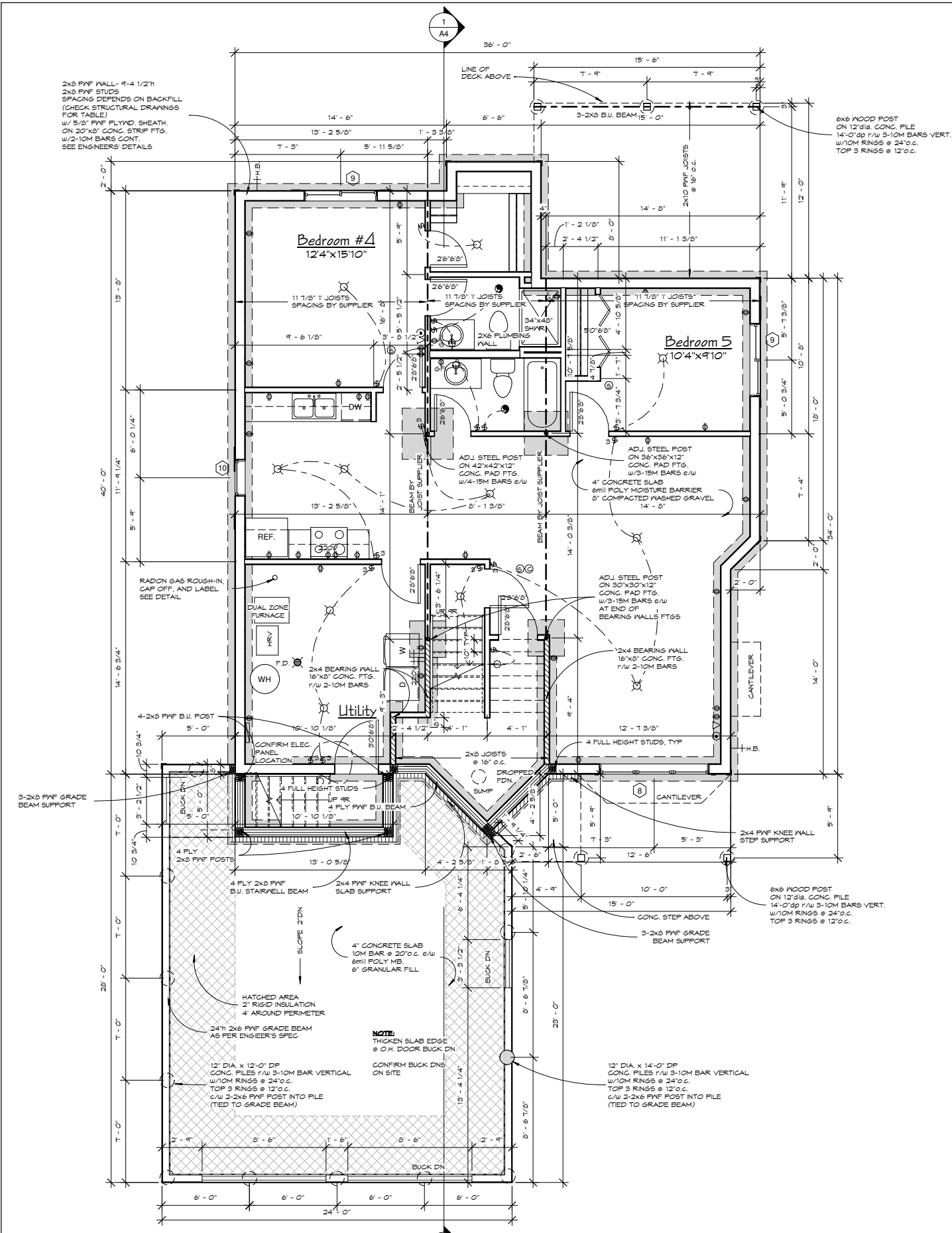
ELECTRICAL LEGEND	
SYM	DESCRIPTION
⊕	OUTLET
⊕GFI	GROUND FAULT OUTLET
⊕WP	WATER PROOF OUTLET
⊕220V	220 VOLT OUTLET
⊕	SWITCH
⊕3	3-WAY SWITCH
⊕	LIGHT
⊕	POT LIGHT
⊕	WALL MOUNTED LIGHT
⊕P.C.	FULL CORD LIGHT
⊕	TELEPHONE OUTLET
⊕WP	WATER PROOF TELEPHONE OUTLET
⊕	CABLE/ANTENNA CONNECTION
⊕	SMOKE DETECTOR
⊕	CARBON MONOXIDE DETECTOR
⊕	EXHAUST FAN
⊕	TV OUTLET
⊕	FLOOR OUTLET
⊕	ELECTRICAL PANEL (CONFIRM LOCATION)
COMP	COMPUTER NETWORKING CONNECTION
HT	HOME THEATER SPEAKERS

Window Schedule				
Type Mark	Count	Width	Height	Comments
1	1	5' - 0"	6' - 0"	Picture/Picture
2	3	1' - 6"	6' - 0"	Casement
3	1	5' - 0"	3' - 4"	Casement/ Picture
4	2	4' - 0"	4' - 0"	Casement/ Picture
5	4	4' - 0"	3' - 4"	Casement/ Picture
6	1	2' - 0"	4' - 0"	Picture
7	1	4' - 3"	1' - 6"	Picture @ 9'-6" Above Landing
8	1	7' - 6"	2' - 6"	Picture/ Picture/ Picture
9	2	5' - 0"	2' - 6"	Sliders
10	1	2' - 6"	2' - 6"	Basement Awning

NOTE:
 CONFIRM R.O.S w/SUPPLIER
 WINDOW MANUFACTURER TO ENSURE BEDROOM
 WINDOWS MEET N.B.C. EGRESS REQUIREMENTS
 PROVIDE EGRESS HARDWARE
 TO ALL BEDROOM CASEMENT WINDOWS

1 Main Floor Plan
 1/4" = 1'-0"

House Area: 1,368 sq.ft.
 Garage Area: 658 sq.ft.



2x6 PWF WALL- 9'-4 1/2"
 2x6 PWF STUDS
 SPACING DEPENDS ON BACKFILL
 (CHECK STRUCTURAL DRAWINGS
 FOR TABLE)
 W/ 5/8" PWF FLYND. SHEATH.
 ON 20"x8" CONC. STRIP FTG.
 W/ 2-10M BARS CONT.
 SEE ENGINEER'S DETAILS

6x6 WOOD POST
 ON 12" DIA. CONC. PILE
 14'-0" DP F/W 3-10M BARS VERT.
 W/ 10M RINGS @ 24" O.C.
 TOP 3 RINGS @ 12" O.C.

NOTE:

- #1) ALL LUMBER IS SPP #2 OR BETTER UNLESS OTHERWISE NOTED.
- #2) NOTCH BEAM FOR TOP PLATE. TOP PLATE CONT. ACROSS BEAM.
- #3) PROVIDE PWF SUMP BOX. CONFIRM LOCATION ON SITE.
- #4) CONFIRM ELECTRICAL LAYOUT W/ OWNER PRIOR TO PRIGS.
- #5) BEAMS AS NOTED OR ENGINEERED BEAMS BY FLOOR SUPPLIER (TIMBERSTRAND OR EQUAL).
- #6) EXACT FURNACE & H.V.T. LOCATIONS DETERMINED ON SITE W/ INSTALLING CONTRACTOR.
- #7) FLOOR SYSTEM TO BE DESIGNED WITH 3/4" T&G OSB SHEATHING GLUED & NAILED TO JOISTS WITH DIRECTLY APPLIED CEILING.
- #8) FLOOR JOIST SUPPLIER TO CONFIRM POST & CONCRETE PAD SIZES UNDER FLOOR BEAMS.
- #9) CONFIRM ELECTRICAL SERVICE ENTRY & PANEL LOCATION. W/ UTILITY COMPANY & OWNER.
- #10) PROVIDE SOLID BLOCKING TO FOUNDATION AT ALL POINT LOAD LOCATIONS.
- #11) PROVIDE LINTELS IN JOIST SPACE AS REQUIRED.
- #12) GRADE BEAM & PILES TO BE 32Mpa CONCRETE.
- #13) CONFIRM FINAL LOCATION OF KITCHEN WINDOW W/ KITCHEN CABINET SUPPLIER. ADJUST TO ALIGN W/ CENTER OF SINK CABINET.
- #14) HANDRAIL REQUIRED ON INTERIOR STAIRS WITH MORE THAN TWO RISERS AND ON EXTERIOR STAIRS WITH MORE THAN THREE RISERS.
- #15) GUARDS ARE REQUIRED FOR DECKS AND LANDINGS WHERE THE DIFFERENCE IN ELEVATION TO ADJACENT SURFACES IS GREATER THAN 600mm (24").
- #16) REQUIRED GUARDS SHALL NOT BE LESS THAN 900mm (36") HIGH.
- #17) CONFIRM FINAL FLOOR JOIST/BREAM SIZES DESIGN W/ FLOOR SYSTEM MANUFACTURER/SUPPLIER.
- #18) PROVIDE ATTIC VENTILATION TO 9.19.1.2. 2015 NBC.

NOTE:

JOIST/BREAM SUPPLIER TO CONFIRM CONCRETE PAD SIZES UNDER FLOOR BEAMS PRIOR TO THE START OF CONSTRUCTION



CONCRETE FOOTINGS, PILES, PWF FOUNDATION & PWF GRADE BEAMS ONLY

Association of Professional Engineers & Geoscientists of Saskatchewan
 CERTIFICATE OF AUTHORIZATION
 Allied Consultants Engineering Inc.
 Number 3001
 Permission to Consult held by:
 Discipline Sk. Reg. No. Signature
 Andrew Baly

1 Foundation Plan
 1/4" = 1'-0"
 AREA: 1,350ft²

TALL WALL REQUIREMENTS:
 FOR WALLS 10' TO 18' IN HEIGHT, FRAME WITH 2x6 SFF No.1/No. 2 STUDS @ 16" o.c. w/SOLID BLOCKING @ 4'-0" o.c. VERTICALLY. INSTALL 2 FULL HEIGHT STUDS EACH SIDE OF OPENINGS UP TO 4'-0" AND 3 FULL HEIGHT FOR OPENINGS UP TO 8'-0".

NOTE:
 TRUSS DESIGN BY OTHERS. CONFIRM TRUSS LAYOUT PRIOR TO CONSTRUCTION. TRUSS MANUFACTURER TO PROVIDE TRUSS LAYOUT & SHOP DRAWINGS.

ROOF ASSEMBLY
 ASPHALT SHINGLES (30yr min.)
 #15 ASPHALT FELT EAVE PROTECTION
 CONTINUOUS METAL DRIP EDGE
 7/16" OSB SHEATH. c/w H-CLIPS
 ENGINEERED ROOF TRUSSES @ 24" o.c.
 (BRACING & STRAPPING REQUIREMENTS BY MANUFACTURER)
 R50 BATT INSULATION (OR EQUIV.)
 6mil POLY VAPOUR BARRIER
 1/2" CD GYPSUM BOARD
 CEILING FINISH

2x6 FASCIA BOARD
 w/PRE-FINISHED ALUMINUM FASCIA

VENTED ALUMINUM SOFFIT

EXTERIOR WALL ASSEMBLY
 HORIZONTAL VINYL SIDING
 TYVEK HOUSE WRAP (OR EQUIV.)
 3/8" OSB WALL SHEATHING
 2x6 SFF#2 STUDS @ 16" o.c.
 R22 BATT INSULATION
 6mil CGSB POLY VAPOUR BARRIER
 1/2" GYPSUM BOARD
 WALL FINISH

FOUNDATION ASSEMBLY
 WATERPROOFING
 5/8" PWF SHEATHING
 2x6 PWF STUDS
 SPACING DEPENDS ON BACKFILL
 (CHECK STRUCTURAL DRAWINGS FOR TABLE)
 R20 BATT INSULATION
 6mil CGSB POLY VAPOUR BARRIER
 1/2" GYPSUM BOARD
 WALL FINISH

MAIN FLOOR ASSEMBLY
 FLOOR FINISH
 23/32" T&G OSB FLOOR SHEATH.
 GLUED AND SCREWED TO JOISTS
 11 1/8" T JOISTS SPACING BY SUPPLIER
 1/2" CD GYPSUM BOARD

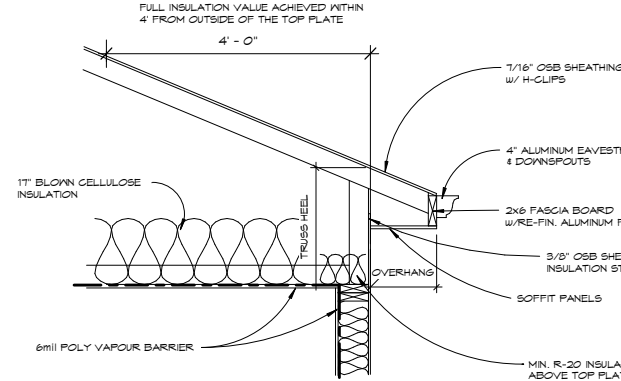
TYP. INT. WALL
 WALL FINISH
 1/2" GYPSUM BOARD
 2x4 STUDS @ 16" o.c.
 1/2" GYPSUM BOARD
 WALL FINISH

ENTRY FLOOR ASSEMBLY
 FLOOR FINISH
 23/32" T&G OSB FLOOR SHEATH.
 GLUED AND SCREWED TO JOISTS
 2x6 JOISTS @ 16" o.c.

SLAB ASSEMBLY
 4" CONCRETE SLAB
 10M BARS @ 20" o.c. e/w
 6mil CGSB POLY MOISTURE BARRIER
 8" GRANULAR FILL

CONC. FLOOR ASSEMBLY
 4" CONG. SLAB
 6mil CGSB POLY MOISTURE BARRIER
 8" COMPACTED GRANULAR FILL

20"x8" CONCRETE FOOTING
 w/ 2-10M BAR CONT.
 (SEE ENG. DETAIL)



2 Eave Detail
 3/4" = 1'-0"

EXTERIOR GARAGE WALL ASSEMBLY
 HORIZONTAL VINYL SIDING
 TYVEK HOUSE WRAP (OR EQUIV.)
 3/8" OSB WALL SHEATHING
 2x6 SFF#2 STUDS @ 16" o.c.
 R22 BATT INSULATION
 6mil CGSB POLY VAPOUR BARRIER
 1/2" GYPSUM BOARD
 WALL FINISH

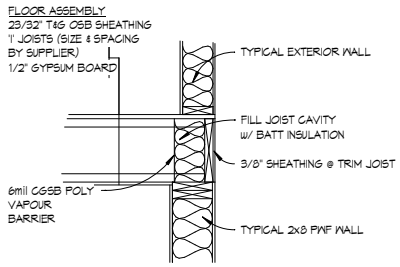


CONCRETE FOOTINGS, PILES, PWF FOUNDATION & PWF GRADE BEAMS ONLY

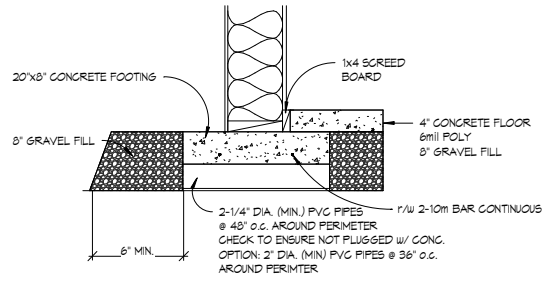
Association of Professional Engineers & Geoscientists of Saskatchewan
 CERTIFICATE OF AUTHORIZATION
 Allied Consultants Engineering Inc.
 Number 38201
 Permission to Consult held by:
 Discipline: Sr. Reg. No. Signature

1 Section 1
 1/4" = 1'-0"

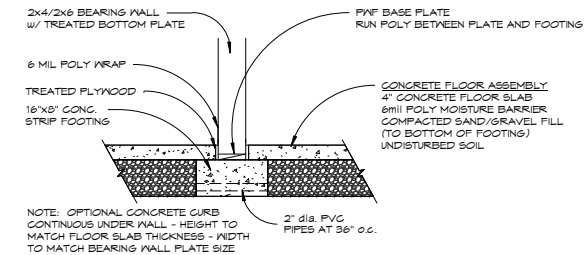
3 Floor Connection Detail
 3/4" = 1'-0"



4 Conc. Ftg. Detail
 1/4" = 1'-0"



5 Bearing Wall Detail
 1/4" = 1'-0"



6 Radon Gas Detail
 3/4" = 1'-0"

