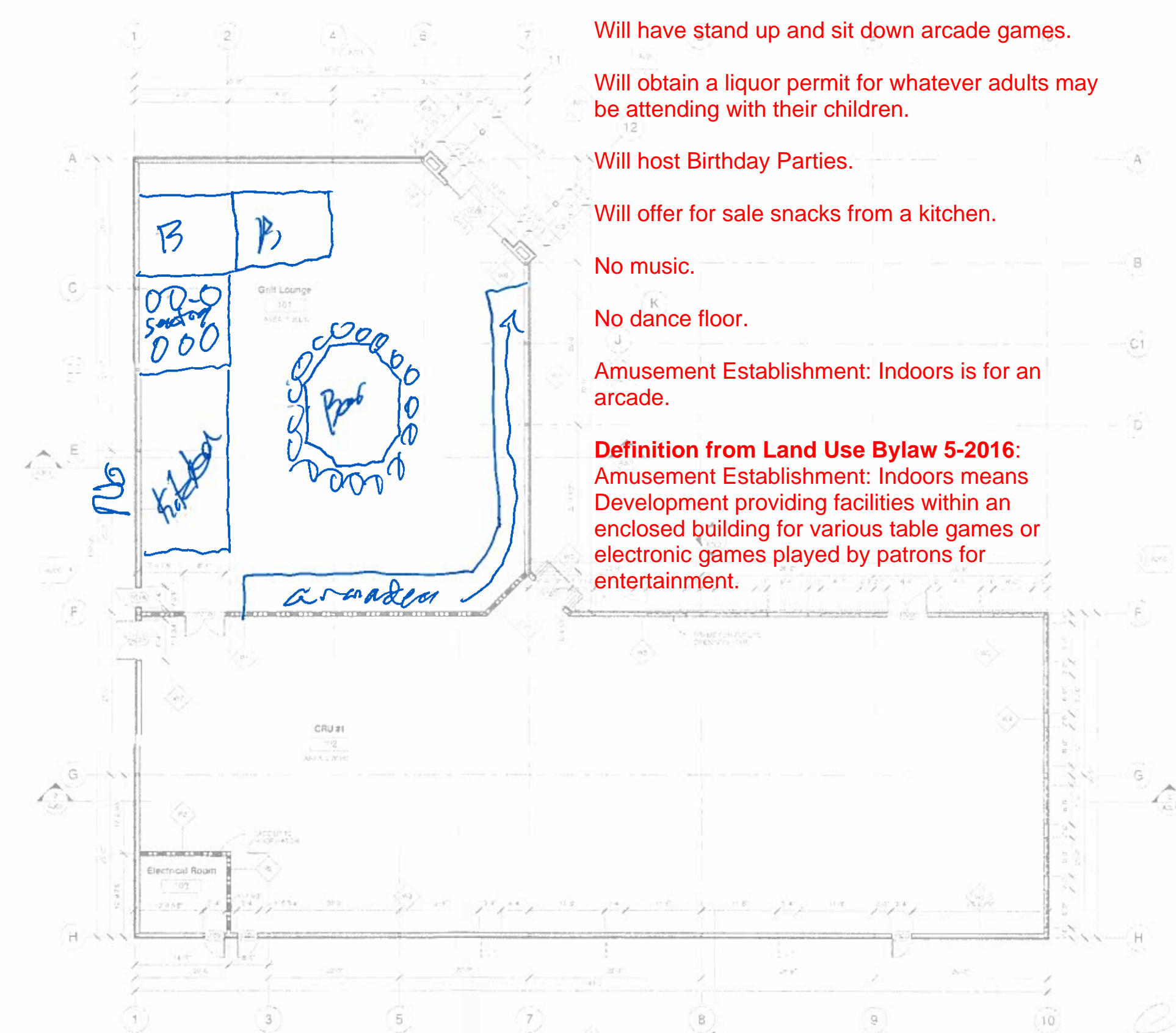


- 1.1 WALL FINISHES**
- 1.2 EXTERIOR WALL - CONCRETE OVER**
 1.2.1 TYPE 1 - 4" MIN. CONCRETE OVER 2" METAL LATHING
 1.2.2 TYPE 2 - 4" MIN. CONCRETE OVER 2" METAL LATHING
 1.2.3 TYPE 3 - 4" MIN. CONCRETE OVER 2" METAL LATHING
 1.2.4 TYPE 4 - 4" MIN. CONCRETE OVER 2" METAL LATHING
 1.2.5 TYPE 5 - 4" MIN. CONCRETE OVER 2" METAL LATHING
 1.2.6 TYPE 6 - 4" MIN. CONCRETE OVER 2" METAL LATHING
 1.2.7 TYPE 7 - 4" MIN. CONCRETE OVER 2" METAL LATHING
 1.2.8 TYPE 8 - 4" MIN. CONCRETE OVER 2" METAL LATHING
 1.2.9 TYPE 9 - 4" MIN. CONCRETE OVER 2" METAL LATHING
 1.2.10 TYPE 10 - 4" MIN. CONCRETE OVER 2" METAL LATHING
- 1.3 EXTERIOR WALL - BRICK OVER**
 1.3.1 TYPE 1 - 4" MIN. BRICK OVER 2" METAL LATHING
 1.3.2 TYPE 2 - 4" MIN. BRICK OVER 2" METAL LATHING
 1.3.3 TYPE 3 - 4" MIN. BRICK OVER 2" METAL LATHING
 1.3.4 TYPE 4 - 4" MIN. BRICK OVER 2" METAL LATHING
 1.3.5 TYPE 5 - 4" MIN. BRICK OVER 2" METAL LATHING
 1.3.6 TYPE 6 - 4" MIN. BRICK OVER 2" METAL LATHING
 1.3.7 TYPE 7 - 4" MIN. BRICK OVER 2" METAL LATHING
 1.3.8 TYPE 8 - 4" MIN. BRICK OVER 2" METAL LATHING
 1.3.9 TYPE 9 - 4" MIN. BRICK OVER 2" METAL LATHING
 1.3.10 TYPE 10 - 4" MIN. BRICK OVER 2" METAL LATHING
- 1.4 EXTERIOR WALL - STUCCO OVER**
 1.4.1 TYPE 1 - 1/2" MIN. STUCCO OVER 1/2" METAL LATHING
 1.4.2 TYPE 2 - 1/2" MIN. STUCCO OVER 1/2" METAL LATHING
 1.4.3 TYPE 3 - 1/2" MIN. STUCCO OVER 1/2" METAL LATHING
 1.4.4 TYPE 4 - 1/2" MIN. STUCCO OVER 1/2" METAL LATHING
 1.4.5 TYPE 5 - 1/2" MIN. STUCCO OVER 1/2" METAL LATHING
 1.4.6 TYPE 6 - 1/2" MIN. STUCCO OVER 1/2" METAL LATHING
 1.4.7 TYPE 7 - 1/2" MIN. STUCCO OVER 1/2" METAL LATHING
 1.4.8 TYPE 8 - 1/2" MIN. STUCCO OVER 1/2" METAL LATHING
 1.4.9 TYPE 9 - 1/2" MIN. STUCCO OVER 1/2" METAL LATHING
 1.4.10 TYPE 10 - 1/2" MIN. STUCCO OVER 1/2" METAL LATHING
- 1.5 EXTERIOR WALL - METAL STUD OVER**
 1.5.1 TYPE 1 - 1/2" MIN. METAL STUD OVER 1/2" METAL LATHING
 1.5.2 TYPE 2 - 1/2" MIN. METAL STUD OVER 1/2" METAL LATHING
 1.5.3 TYPE 3 - 1/2" MIN. METAL STUD OVER 1/2" METAL LATHING
 1.5.4 TYPE 4 - 1/2" MIN. METAL STUD OVER 1/2" METAL LATHING
 1.5.5 TYPE 5 - 1/2" MIN. METAL STUD OVER 1/2" METAL LATHING
 1.5.6 TYPE 6 - 1/2" MIN. METAL STUD OVER 1/2" METAL LATHING
 1.5.7 TYPE 7 - 1/2" MIN. METAL STUD OVER 1/2" METAL LATHING
 1.5.8 TYPE 8 - 1/2" MIN. METAL STUD OVER 1/2" METAL LATHING
 1.5.9 TYPE 9 - 1/2" MIN. METAL STUD OVER 1/2" METAL LATHING
 1.5.10 TYPE 10 - 1/2" MIN. METAL STUD OVER 1/2" METAL LATHING
- 1.6 EXTERIOR WALL - CONCRETE OVER**
 1.6.1 TYPE 1 - 4" MIN. CONCRETE OVER 2" METAL LATHING
 1.6.2 TYPE 2 - 4" MIN. CONCRETE OVER 2" METAL LATHING
 1.6.3 TYPE 3 - 4" MIN. CONCRETE OVER 2" METAL LATHING
 1.6.4 TYPE 4 - 4" MIN. CONCRETE OVER 2" METAL LATHING
 1.6.5 TYPE 5 - 4" MIN. CONCRETE OVER 2" METAL LATHING
 1.6.6 TYPE 6 - 4" MIN. CONCRETE OVER 2" METAL LATHING
 1.6.7 TYPE 7 - 4" MIN. CONCRETE OVER 2" METAL LATHING
 1.6.8 TYPE 8 - 4" MIN. CONCRETE OVER 2" METAL LATHING
 1.6.9 TYPE 9 - 4" MIN. CONCRETE OVER 2" METAL LATHING
 1.6.10 TYPE 10 - 4" MIN. CONCRETE OVER 2" METAL LATHING
- 1.7 EXTERIOR WALL - STUCCO OVER**
 1.7.1 TYPE 1 - 1/2" MIN. STUCCO OVER 1/2" METAL LATHING
 1.7.2 TYPE 2 - 1/2" MIN. STUCCO OVER 1/2" METAL LATHING
 1.7.3 TYPE 3 - 1/2" MIN. STUCCO OVER 1/2" METAL LATHING
 1.7.4 TYPE 4 - 1/2" MIN. STUCCO OVER 1/2" METAL LATHING
 1.7.5 TYPE 5 - 1/2" MIN. STUCCO OVER 1/2" METAL LATHING
 1.7.6 TYPE 6 - 1/2" MIN. STUCCO OVER 1/2" METAL LATHING
 1.7.7 TYPE 7 - 1/2" MIN. STUCCO OVER 1/2" METAL LATHING
 1.7.8 TYPE 8 - 1/2" MIN. STUCCO OVER 1/2" METAL LATHING
 1.7.9 TYPE 9 - 1/2" MIN. STUCCO OVER 1/2" METAL LATHING
 1.7.10 TYPE 10 - 1/2" MIN. STUCCO OVER 1/2" METAL LATHING
- 1.8 EXTERIOR WALL - METAL STUD OVER**
 1.8.1 TYPE 1 - 1/2" MIN. METAL STUD OVER 1/2" METAL LATHING
 1.8.2 TYPE 2 - 1/2" MIN. METAL STUD OVER 1/2" METAL LATHING
 1.8.3 TYPE 3 - 1/2" MIN. METAL STUD OVER 1/2" METAL LATHING
 1.8.4 TYPE 4 - 1/2" MIN. METAL STUD OVER 1/2" METAL LATHING
 1.8.5 TYPE 5 - 1/2" MIN. METAL STUD OVER 1/2" METAL LATHING
 1.8.6 TYPE 6 - 1/2" MIN. METAL STUD OVER 1/2" METAL LATHING
 1.8.7 TYPE 7 - 1/2" MIN. METAL STUD OVER 1/2" METAL LATHING
 1.8.8 TYPE 8 - 1/2" MIN. METAL STUD OVER 1/2" METAL LATHING
 1.8.9 TYPE 9 - 1/2" MIN. METAL STUD OVER 1/2" METAL LATHING
 1.8.10 TYPE 10 - 1/2" MIN. METAL STUD OVER 1/2" METAL LATHING



- Open until 11 PM.
- Will have stand up and sit down arcade games.
- Will obtain a liquor permit for whatever adults may be attending with their children.
- Will host Birthday Parties.
- Will offer for sale snacks from a kitchen.
- No music.
- No dance floor.
- Amusement Establishment: Indoors is for an arcade.

Definition from Land Use Bylaw 5-2016:
 Amusement Establishment: Indoors means Development providing facilities within an enclosed building for various table games or electronic games played by patrons for entertainment.

Main Floor AREA: 11,092ft² (1,030.48m²)
 1/8" = 1'-0"

UCG	
Proposed Strip Mall	
Main Floor Plan	
Border 5 Joint Venture	
SCALE: 1/8" = 1'-0"	
DATE: 2016.03.17	
PROJECT: BORDERS STRIP MALL LOCATION: 1000 WEST 10TH AVENUE, DENVER, CO 80202 DRAWN BY: JACOB CHECKED BY: JACOB PLS 4	
A100	