



LLOYDMINSTER FALL ENVIRONMENTAL AUDIT

Program: Waste, Organics, Recycle

Report Prepared By:

JD Montgomery

GFL Environmental
Inc.

November 2025

This report will present a variety of breakdowns in each stream. Showcasing data like what carts were out for collection, which of those had infractions and noting any instances where stickers had to be applied. The audit revealed key patterns, what needed the most improvement and recognized the areas that residents performed well.

Waste Program:

During the fall audit our team visited approximately 8400 locations. There were 6268 bins out for collection and 1098 of those bins were marked for having infractions. Many of the infractions the audit team saw were highly consistent in cardboard, pumpkins and basic food items.

Data Summary:

Location's Visited	8074
Waste Carts Out for Collection	6368
Locations With No Bins	1706
Amounts of Infractions	1159
Containing Recycling Materials	485
Containing Organic Matter	651
Containing Hazardous Material	1
Waste Carts Overfilled	26
Waste Carts Stickered	32

Not Severe: Containing small amounts of infractions, such as one piece of cardboard or small amounts of food matter *[These bins are not stickered]*

Mildly Severe: Containing decent amounts of infractions, such as multiple pieces of recycling or a small bag of yard waste. *[These can be stickered, depending on the level\ type of infraction]*

Very Severe: Containing large amounts of infractions, such as full bags of recycling, multiple or big cardboard boxes, as well as large amounts of organic matter like full bags of yard waste or food waste. *[These bins are stickered and refused collection]*

Waste Overall Infraction Rate: 18.20%

Infraction Severity	Number of Infractions In Bins
Not Severe	940
Mildly Severe	152
Very Severe	6

Fill Percentile	Number of Bins	Percentage of Bins
0-25%	1078	16.93%
26-50%	1483	23.29%
51-75%	1440	22.61%
76-100%	2341	36.76%
Overfilled	26	0.41

Figures: Waste Program

Figure 1. This pie chart represents the comparison between the houses that had bins out for collection and the houses with no bins out.

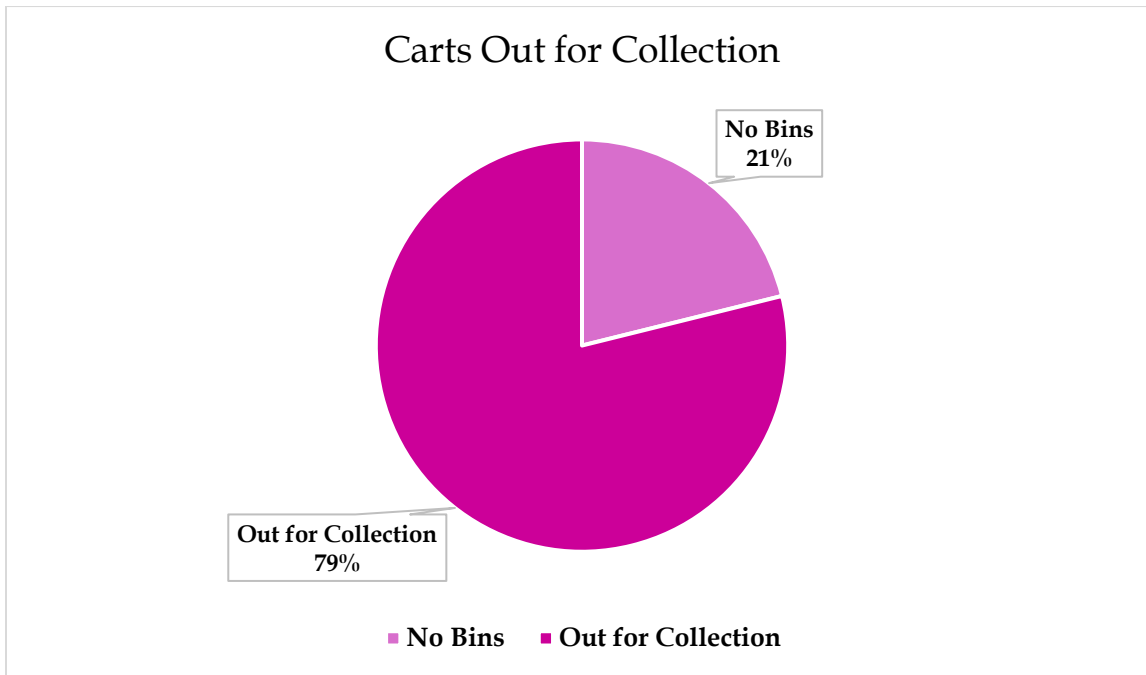


Figure 2. This represents the fill percentage for the waste carts out for collection

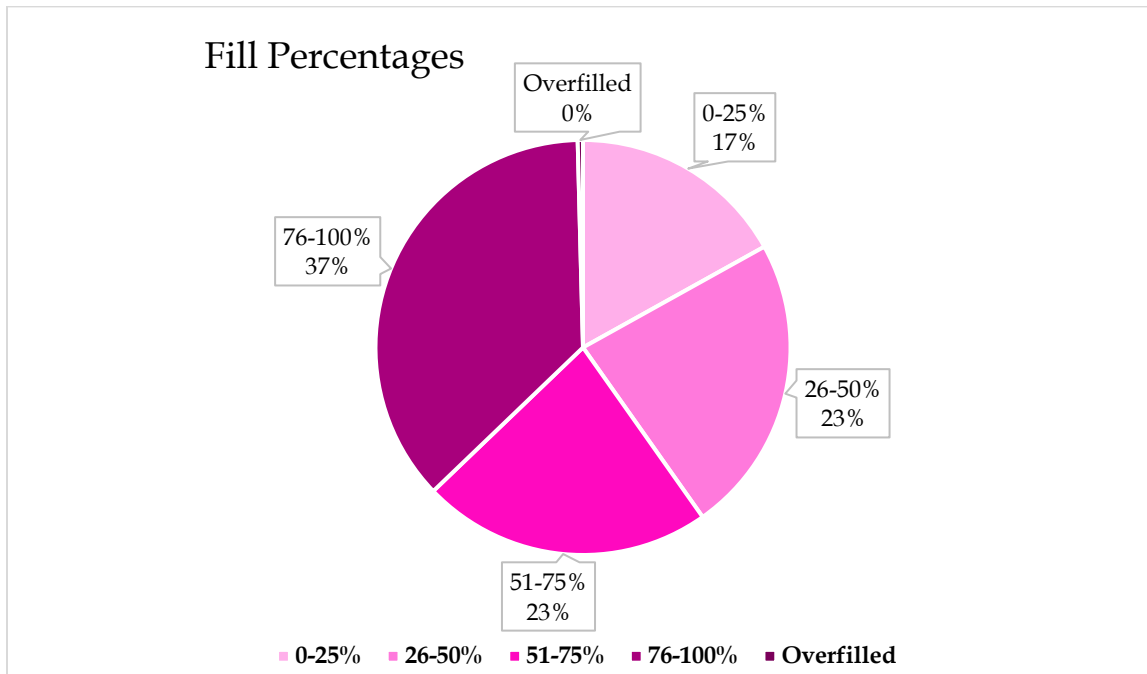


Figure 3. This represents the comparison in severity levels in the waste bins

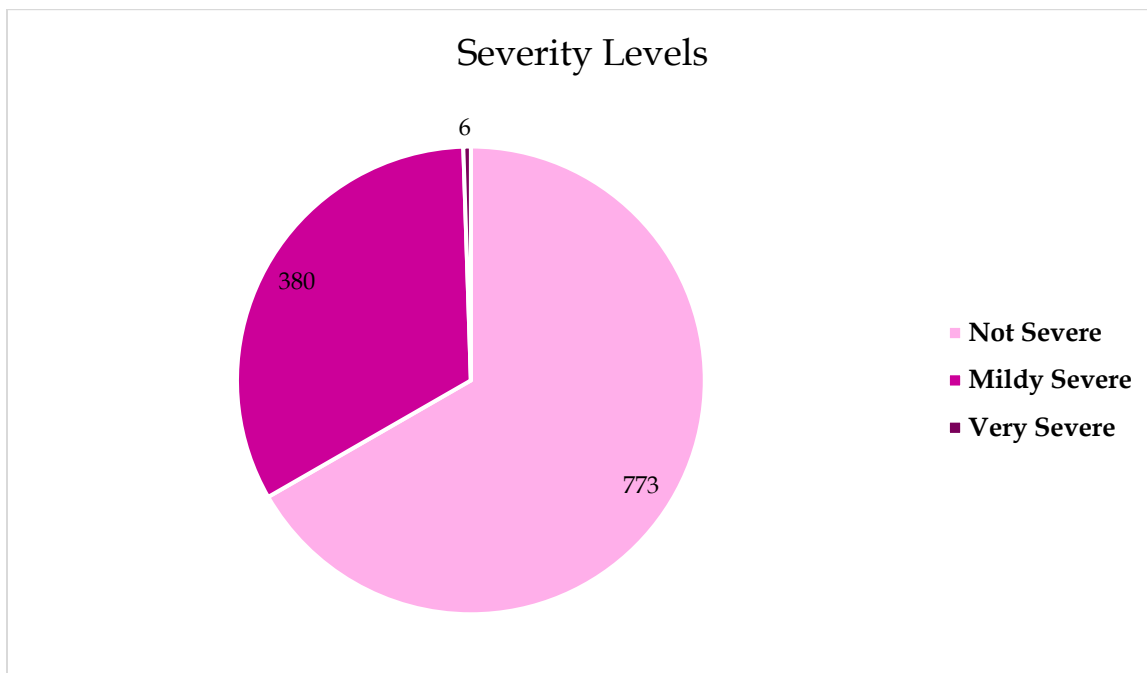


Figure 4. This represents the comparison of the severity levels in each percentile level.

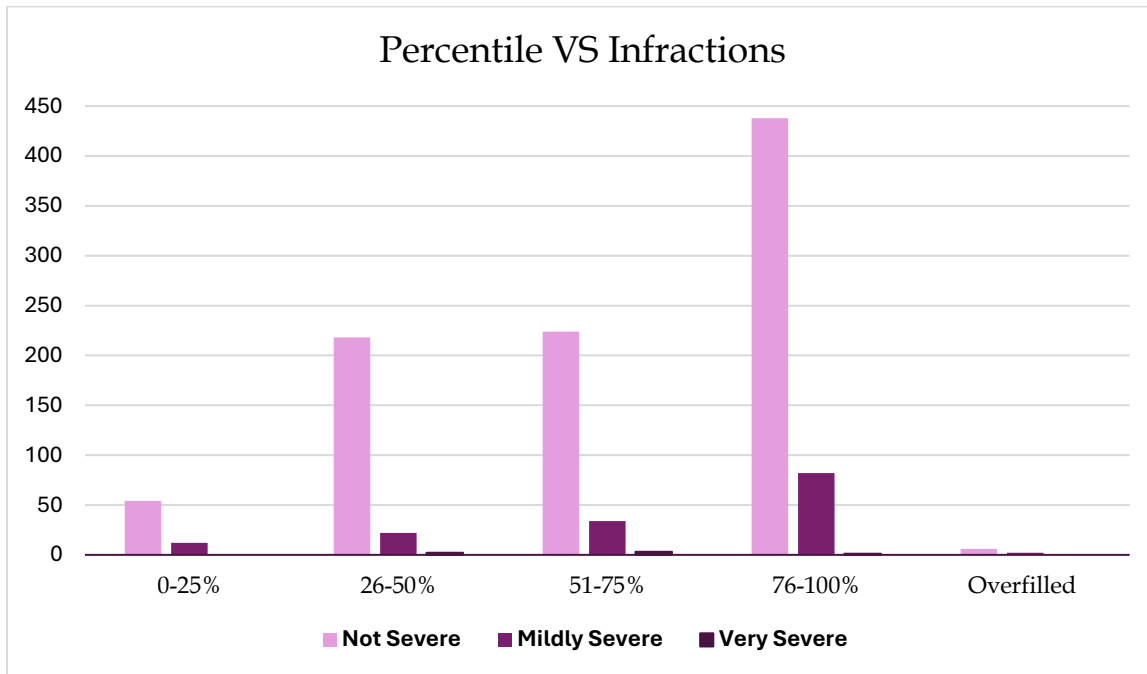
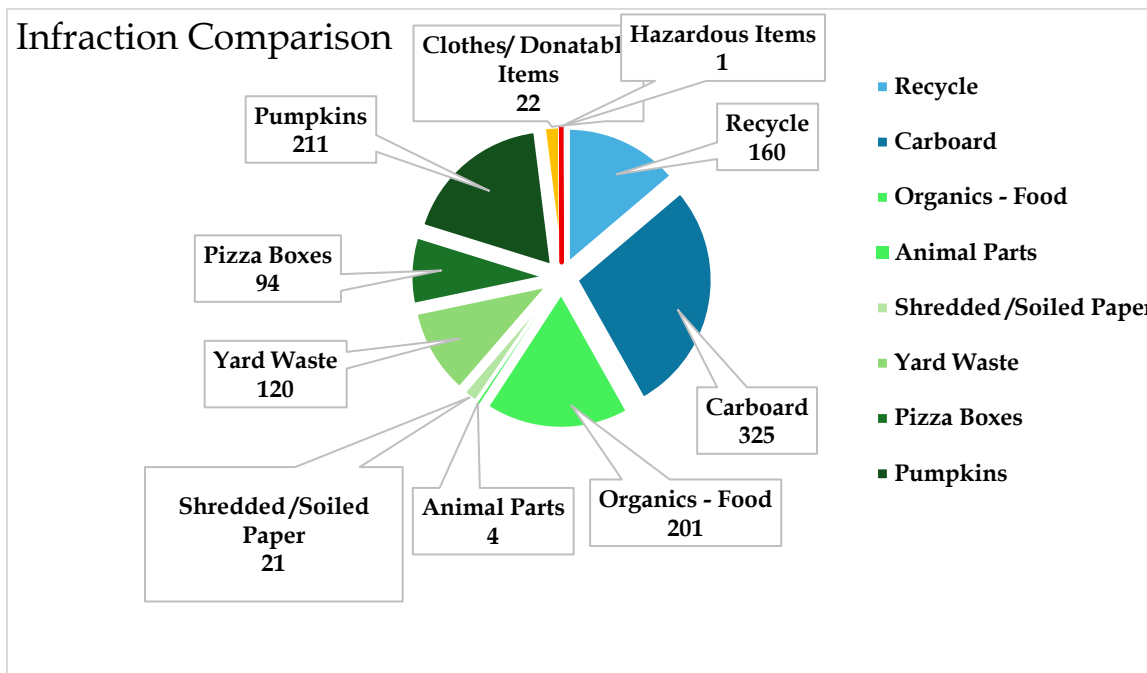


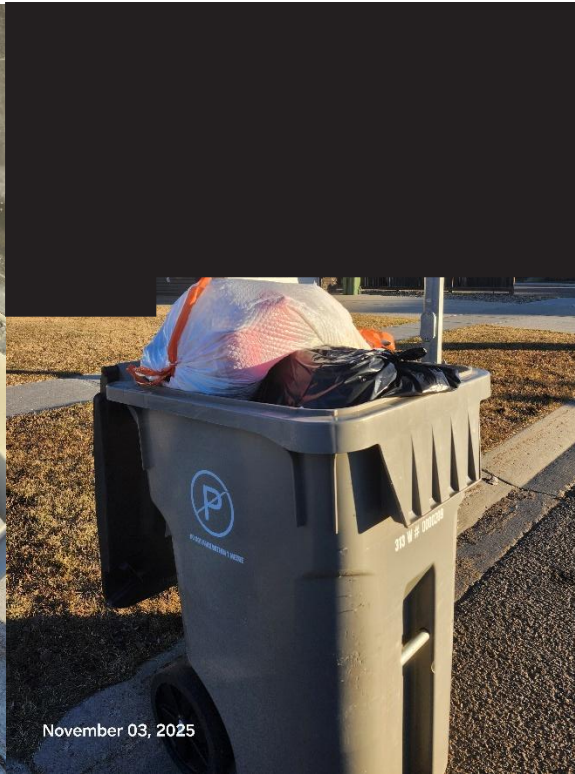
Figure 5. This represents the comparison between the different contaminants found in the waste carts.

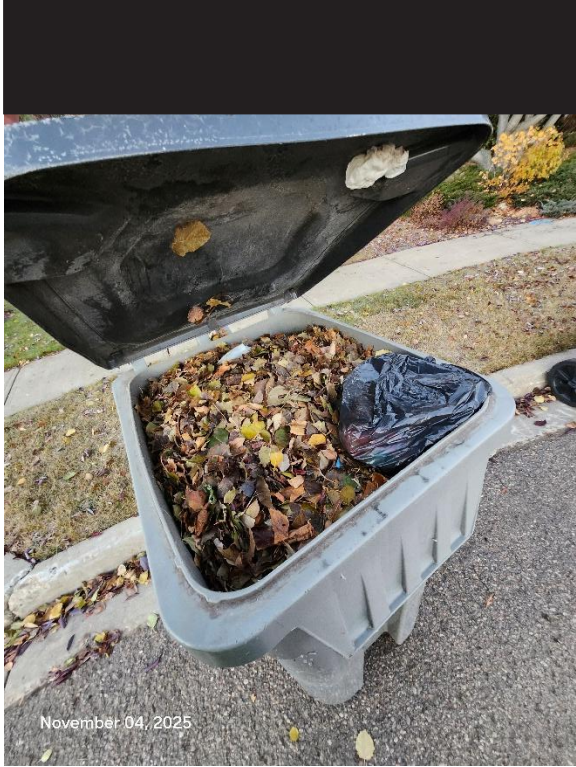


Hazardous Materials	Organic Materials	Recycle Materials
<ul style="list-style-type: none"> ○ Hover Board 	<ul style="list-style-type: none"> ○ Pumpkins ○ Yard Waste ○ Food – Scraps ○ Pizza Boxes ○ Shredded Paper and Soiled paper/cardboard ○ Animal Parts 	<ul style="list-style-type: none"> ○ Cardboard ○ Bottles/Cans ○ Ridged Plastics <ul style="list-style-type: none"> ○ Ex. Ketchup bottle ○ Newspaper

During the fall audit, there was a significant number of organic materials in the waste bins. Many contained only yard waste or pumpkins in the bins. Cardboard was another very common find and in many cases bins with cardboard had no recycling out.

↓ Below are a few examples of the findings in the waste audit. ↓

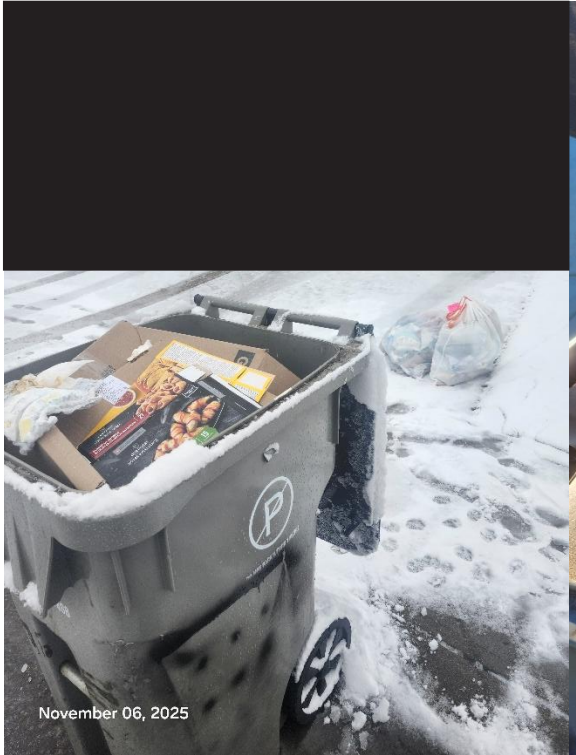




November 04, 2025



November 04, 2025



November 06, 2025



November 03, 2025

Organics Program:

During the organics portion of the audit, it was evident that participation was very limited, as many residents were still adjusting to the schedule change with winter starting. There were only 2543 bins set out for collection and 474 of those bins had infractions.

Data Summary:

Locations Visited	8074
Organic Carts Out For Collection	2543
Locations with No Bins	5531
Organics Carts with Infractions	474
Number of Infractions	486
Recycle Materials	274
Waste Materials	128
Yard waste/ Organic in plastic bags	83
Organic Carts Overfilled	2
Organic Carts Stickered	257

Not Severe: Containing small amounts of infractions, such as one piece of waste or small amounts of food matter *[These bins are not stickered]*

Mildly Severe: Containing decent amounts of infractions, such as multiple pieces of recycling or a small bag of yard waste. *[These can be stickered, depending on the level\type of infraction]*

Very Severe: Containing large amounts of infractions, such as full bags of recycling, multiple or big cardboard boxes, any large plastic items or large amounts of basic garbage *[These bins are stickered and refused collection]*

Organics Overall Infraction Rate: **19.11%**

Infraction Severity	Number of Infractions In Bins
Not Severe	201
Mildly Severe	123
Very Severe	162

Fill Percentile	Number of Bins	Percentage of Bins
0-25%	429	16.87%
26-50%	612	24.06%
51-75%	542	21.31
76-100%	958	37.67
Overfilled	2	0.08

Figures: Organics Program

Figure 1. This represents the comparison between the houses that had bins out for collection and the house with no bins out.

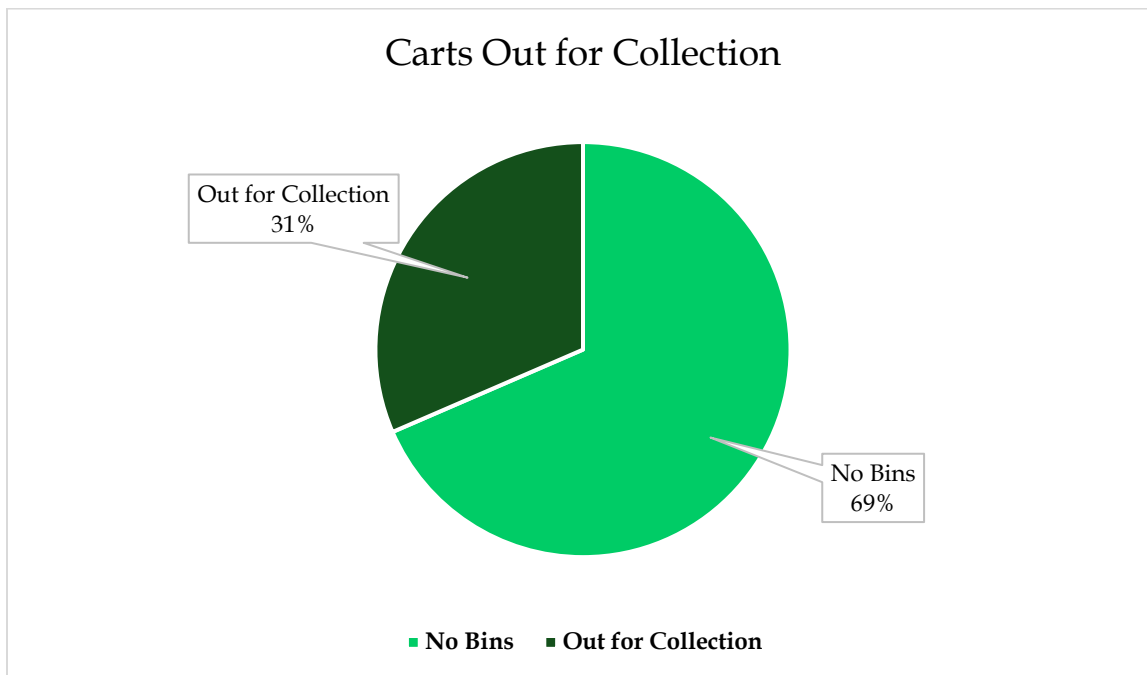


Figure 2. This represents the fill percentages for the organic carts out for collection.

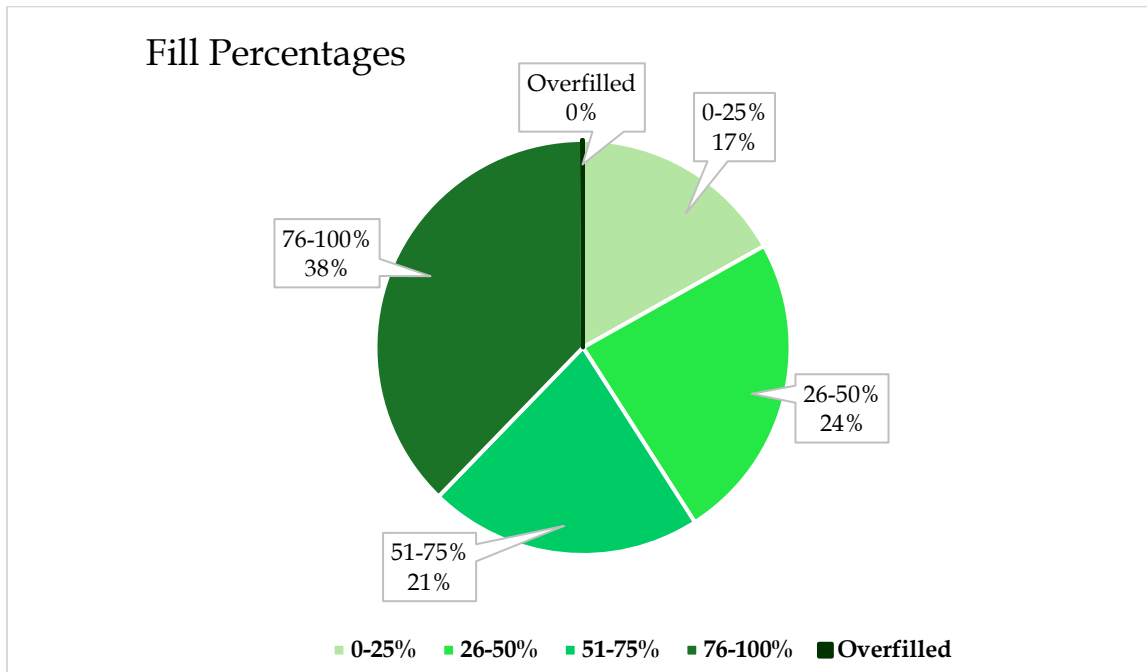


Figure 3. This represents the comparison in severity levels

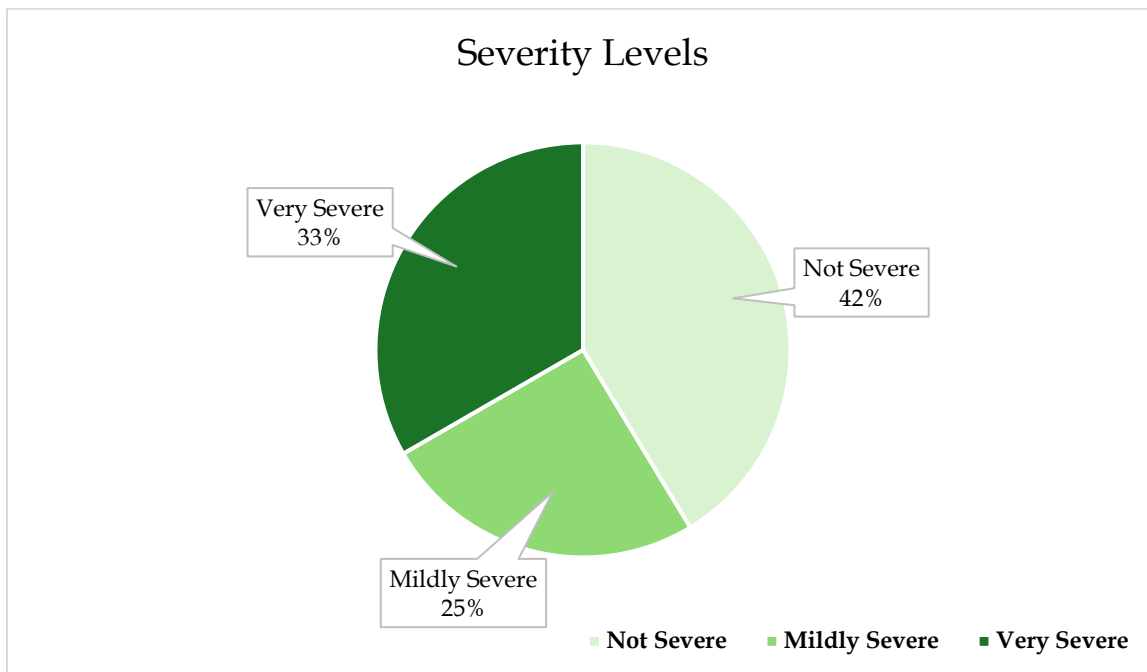


Figure 4. The chart represents the comparison between the fill percentage and the severity infractions.

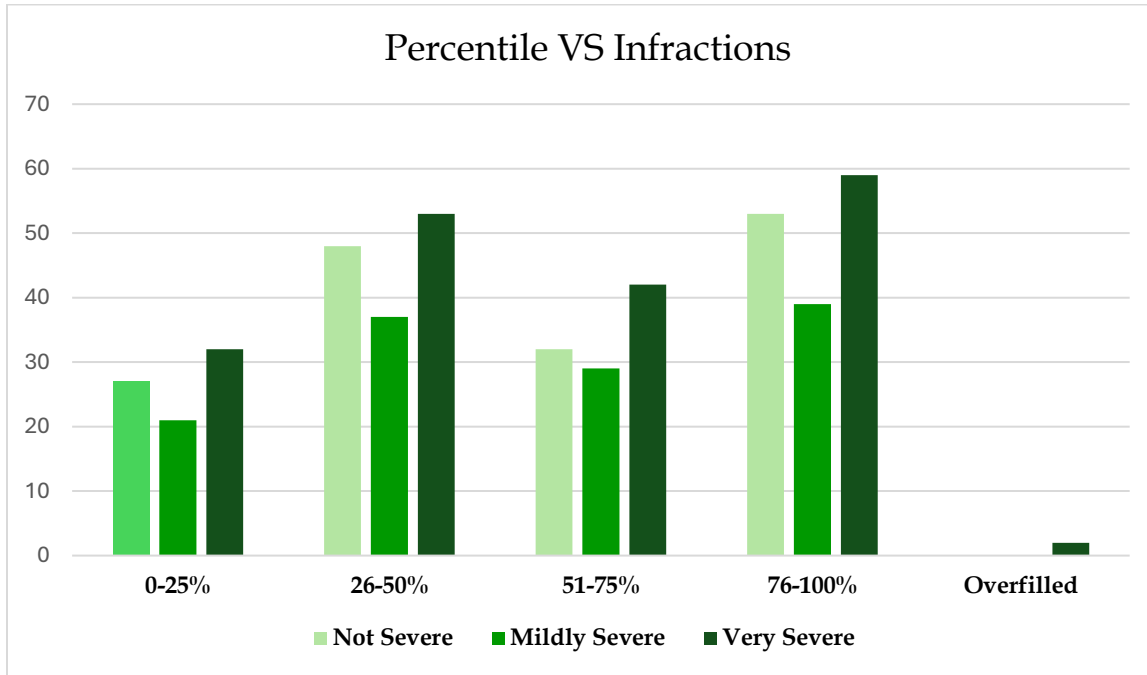
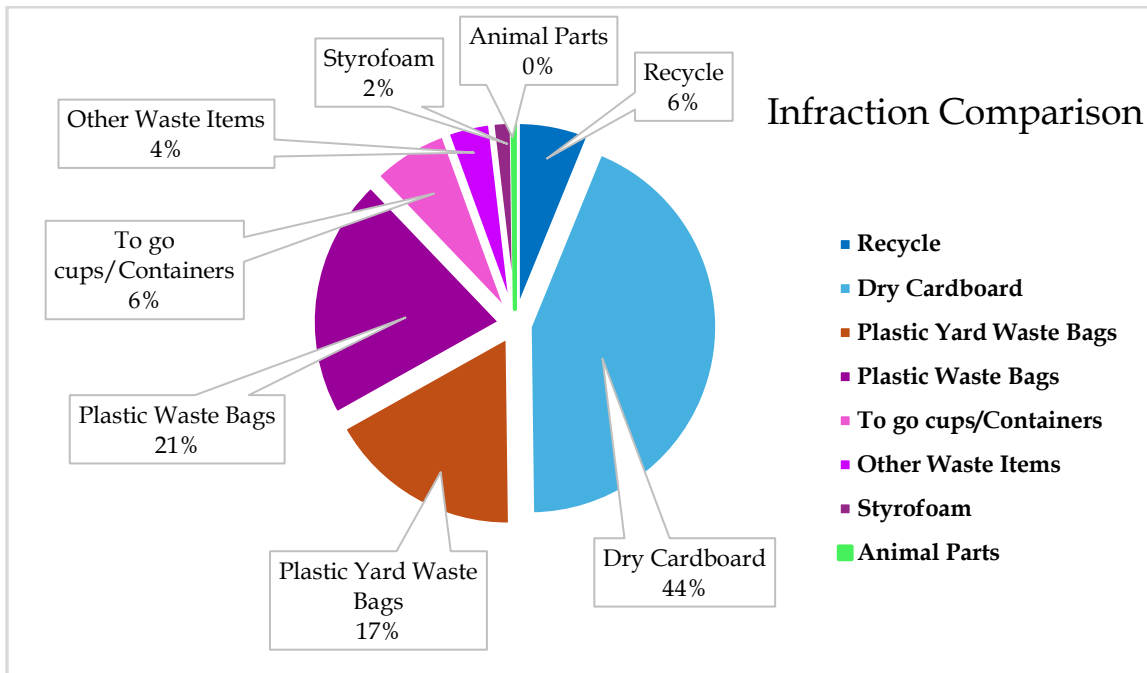


Figure 5. This represents the comparison between the infractions



Waste Infractions	Recycle Infractions
<ul style="list-style-type: none"> ○ Plastic bags ○ General waste ○ Plastic bags filled with yard waste bags ○ Fabric bags ○ Clothes, blankets, etc ○ Styrofoam or packing materials ○ To go cups/Containers with food still in 	<ul style="list-style-type: none"> ○ Cardboard ○ Bottles ○ Cans ○ Papers

In the organics part of the audit, only 30% of the residents are using their bins. While this number is very low, 19% of the bins that were out had an infraction of some level. The team had also encountered several residents whose bins were already stickered and had to be stickered again.

↓ Below are a few examples of the findings in the organics audit. ↓





Recycle Program:

As the recycling program was completed in the first week, there were only 2857 homes with recycling out. Due to the low number of participants, recycling was redone in the second week so more data could get collected. The second week had less participation and contained more infractions compared to the first week.

Data Summary:

	Week 1	Week 2
Locations Visted	8074	8074
Recycling Out for Collection	2857	2466
No Recycling out	5217	5608
Total Infractions	363	565
Bags containing Metal/Fabrics	10	67
Bags containing Styrofoam	7	10
Bags containing plastic film/ Thin Plastics	98	210
Single Use Cups/ Containers	42	73
Pizza Boxes	174	158
Food/ Dirty containers	6	13
Shredded Paper	11	9
Soiled Cardboard	15	21
Hazardous Materials	0	1
Stickered Recycling	97	202

Not Severe: Containing small amounts of infractions, Such as one single use plastic or a few food scraps. *[These bins are not stickered]*

Mildly Severe: Containing decent amounts of infractions, Such as two or more plastics or take out containers with food residue left or multiple pizza boxes **[These can be stickered, depending on the level\type of infraction]**

Very Severe: Containing large amounts of infractions, Such as full bags of Styrofoam, shredded paper, or large amounts of loose garbage *[These bins are stickered and refused collection]*

Recycle Overall Infraction Rate: **Week 1 = 12.70%**

Recycle Overall Infraction Rate: **Week 2 = 22.79%**

Infractions Severity	Number of Bags Week 1	Number of Bags Week 2
Not Severe	203	299
Mildly Severe	96	139
Very Severe	64	124

Week 1

Fill Percentile	Number of Bins	Percentage of Bags
1	1568	54.88%
2	817	28.60%
3	280	9.80%
4+	192	6.72%

Week 2

Fill Percentile	Number of Bins	Percentage of Bags
1	1656	67.15%
2	497	18.94%
3	219	8.88%
4+	94	3.81%

Figures:

Figure 1. This represents the comparison between the houses with recycling out for collection and the houses that did not participate in the recycling program.

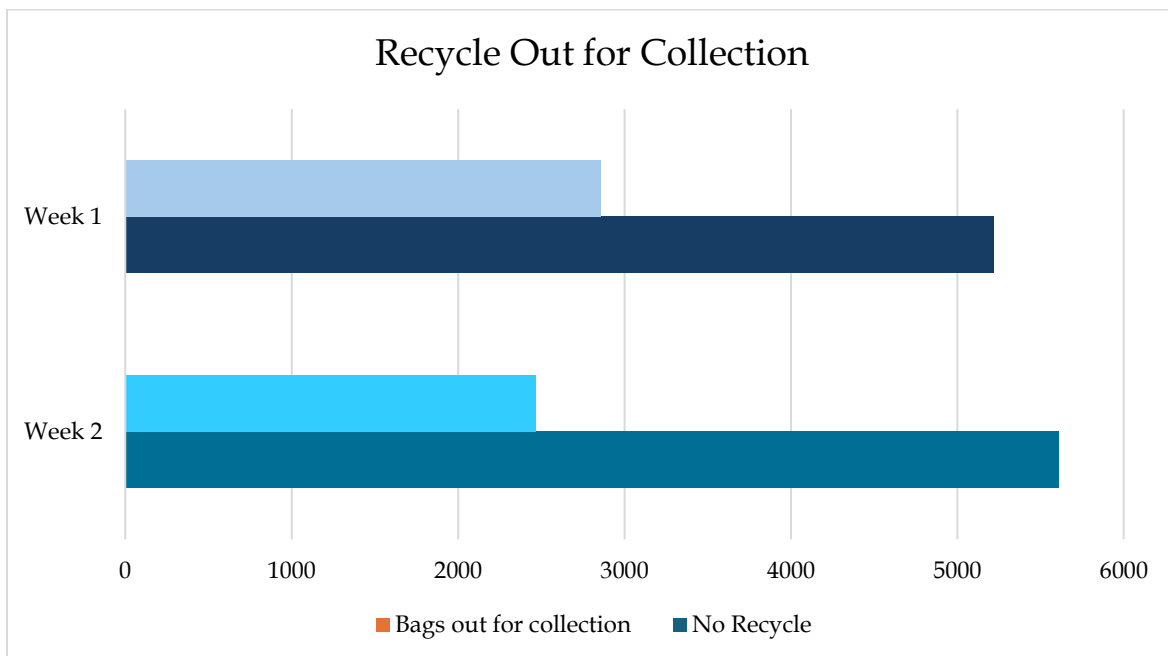


Figure 2. This represents the number of bags that were out for collection.

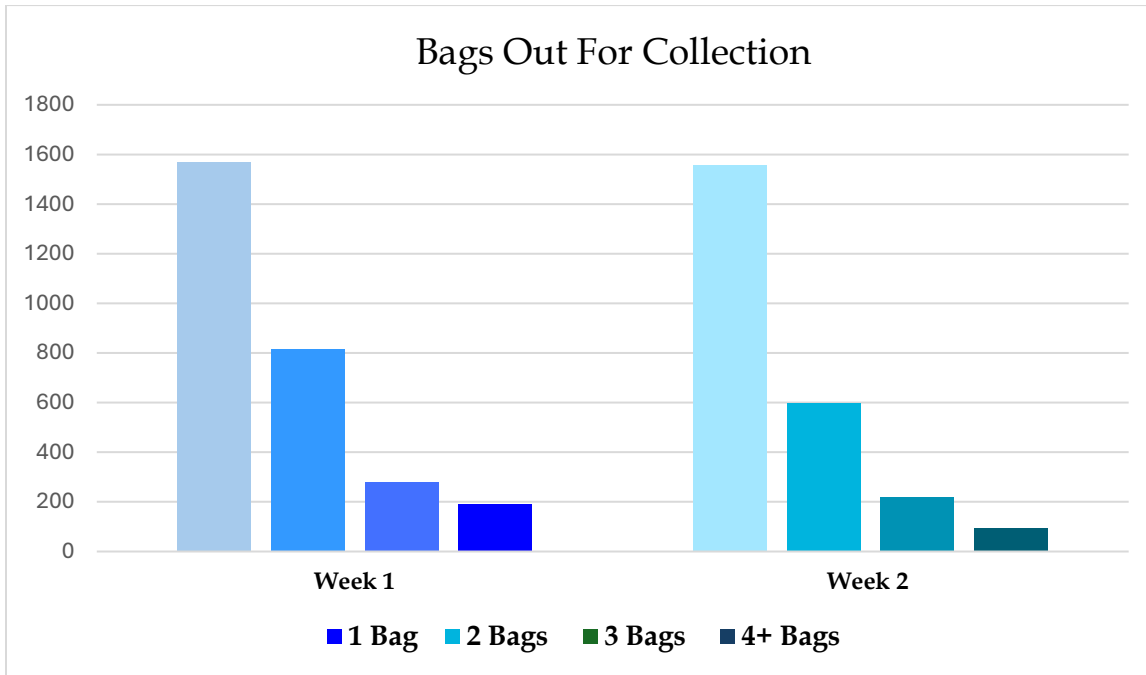
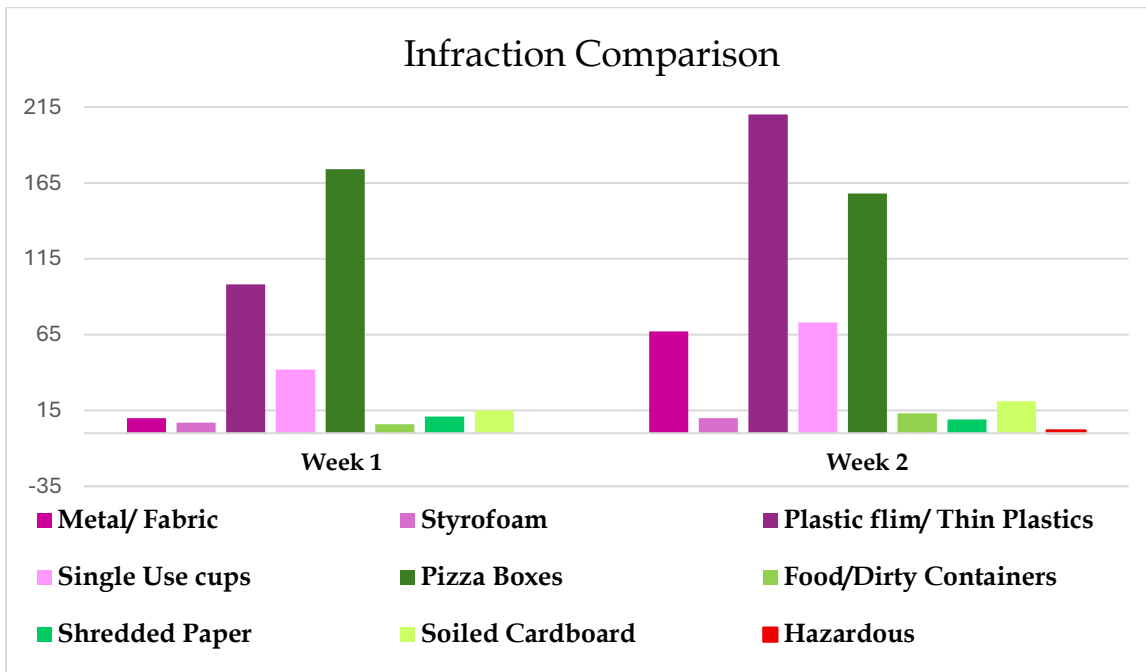


Figure 3 This represents the Comparison between the infractions.



Waste Materials	Organic Materials	Hazardous Materials
<ul style="list-style-type: none"> ○ Single use cups ○ Basic waste ○ Styrofoam ○ Plastic film/ Thin plastics ○ Metal ○ Fabrics- clothes ○ Food bags- Candy wrappers, chip bags ○ Packing materials 	<ul style="list-style-type: none"> ○ Pizza Boxes ○ Food ○ Dirty Containers ○ Shredded Paper ○ Soiled cardboard/ tissues 	<ul style="list-style-type: none"> ○ Paint Cans ○ Vapes

↓ Below are a few examples of the findings in the Recycle audit. ↓





Conclusion:

During the 2025 Fall audit, our team observed varying levels of participation from the residents in all three streams. Waste collection showed the highest level of engagement, while both recycling and organics showed much lower numbers. Despite the differences, all three streams shared having multiple levels of contamination. The most common infractions across all streams were pizza boxes, cardboard and plastic items.

While having conversations with the residents, it was proven that some were uncertain about the differences between materials and the importances of proper sorting. To improve understanding, our suggestion would be to hand out flyers, post on social media and have conversations with the resident's face to face to ensure all questions and concerns can get answered immediately. This would also help to provide ongoing support to the community.

Overall, participation could increase if residents improved their sorting habits. Many homes with full, even half full bins containing cardboard, did not set out their recycling during both weeks of the audit. Numerous green and waste bins seemed to have switched streams, as it was very frequent to find yard waste, pumpkins and other organic materials in the waste bin. While at the same time, multiple plastic bags and waste items were found in the organics bin. Furthermore, the importance of educating the residents is a necessity.

Thank you once again for participating in the GFL audit of 2025. GFL looks forward to working together to ensure growth and more possible learning opportunities in Lloydminster.

