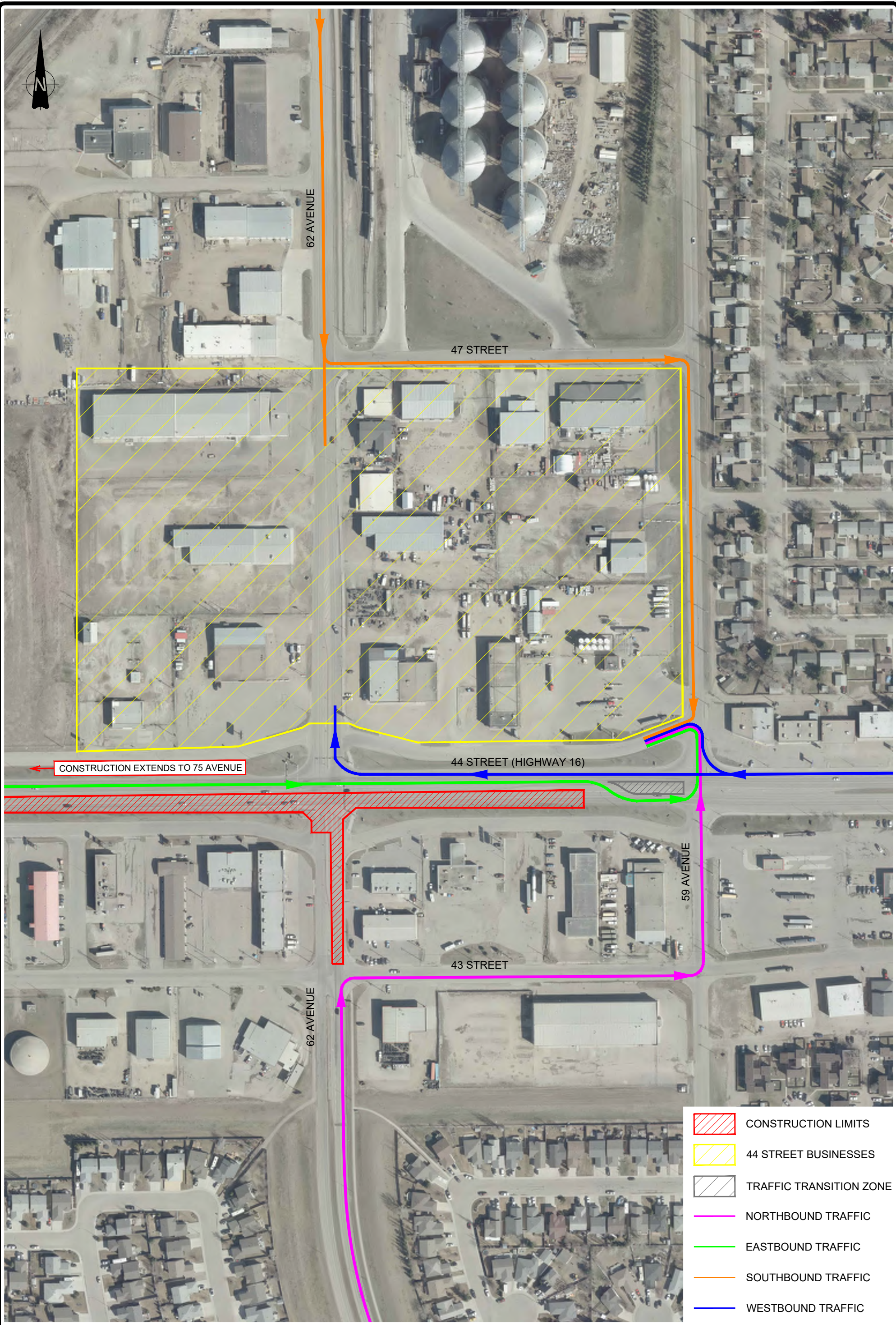
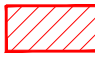
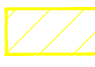







Drawing path: C:\Users\waguinaldo\OneDrive - City of Lloydminster\Projects\Current\2020\2004 - 44 Street Rehabilitation\1-Correspondence\3-Public Notices\Detour Plans\2021\0831 Phase 2 (EB Const)\Working files\44 Street North.dwg Plotted: September 01, 2021 11:13:40 AM



-  CONSTRUCTION LIMITS
-  44 STREET BUSINESSES
-  TRAFFIC TRANSITION ZONE
-  NORTHBOUND TRAFFIC
-  EASTBOUND TRAFFIC
-  SOUTHBOUND TRAFFIC
-  WESTBOUND TRAFFIC

The City of Lloydminster

Engineering

Business Detour Routes - Phase II Construction

5904 - 6210 44 Street
Lloydminster, AB

Drawn by:	WA
Date:	September 1, 2021
Drawing #:	MS-0037-21

