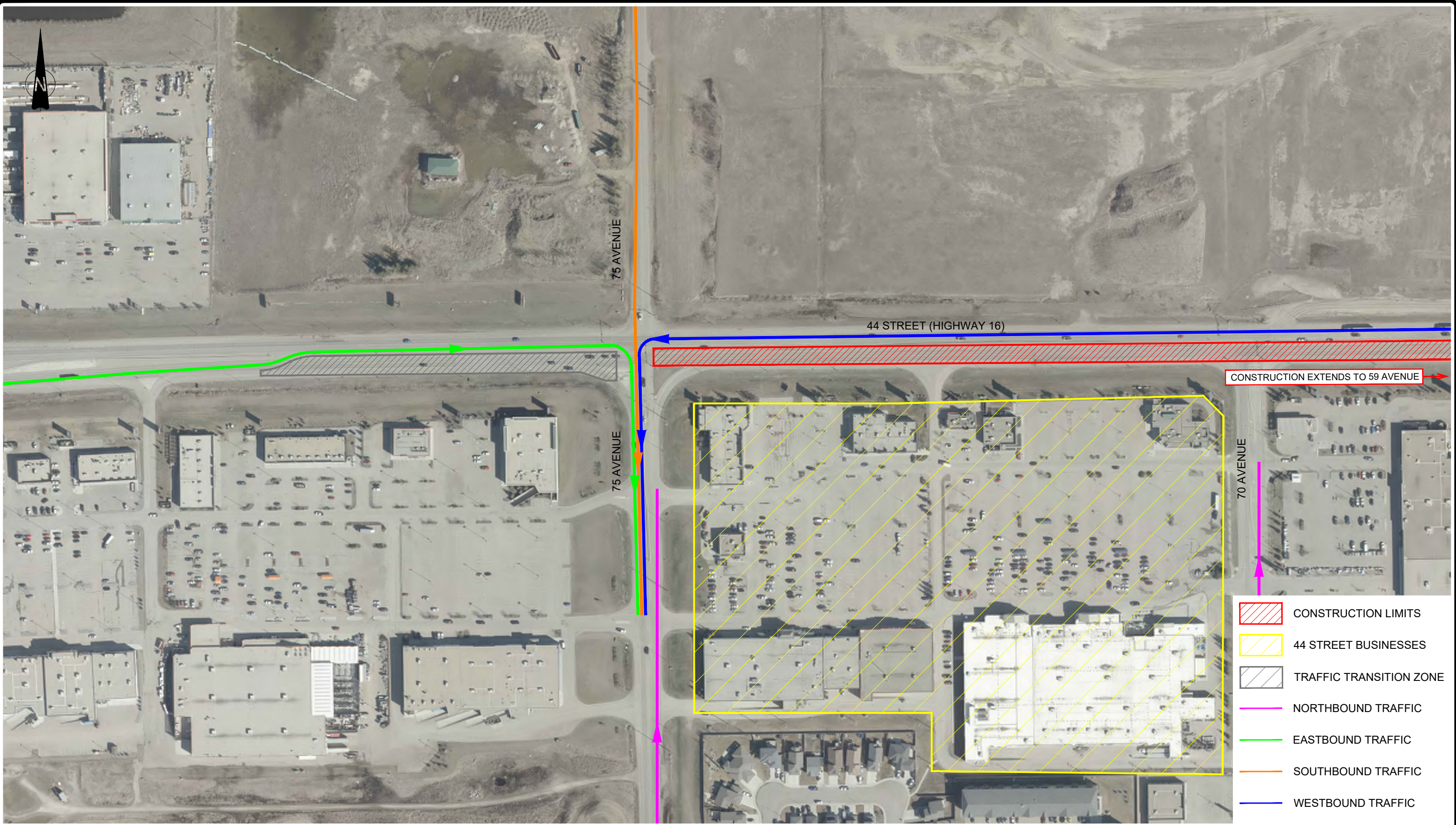









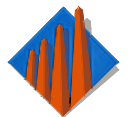
Drawing path: C:\Users\waguinad\OneDrive - City of Lloydminster\Projects\Current\20202004 - 44 Street Rehabilitation\1-Correspondence\3-Public Notices\Detour Plans\20210831 Phase 2 EB Cons\Working files\44 Street South West 75 Ave.dwg Plotted: September 01, 2021 11:16:20 AM



CONSTRUCTION EXTENDS TO 59 AVENUE

-  CONSTRUCTION LIMITS
-  44 STREET BUSINESSES
-  TRAFFIC TRANSITION ZONE
-  NORTHBOUND TRAFFIC
-  EASTBOUND TRAFFIC
-  SOUTHBOUND TRAFFIC
-  WESTBOUND TRAFFIC

**The City of Lloydminster**



### Business Detour Routes - Phase II Construction

7001 - 7401 44 Street  
Lloydminster, AB

*Engineering*

Drawn by:	WA
Date:	September 1, 2021
Drawing #:	MS-0037-21