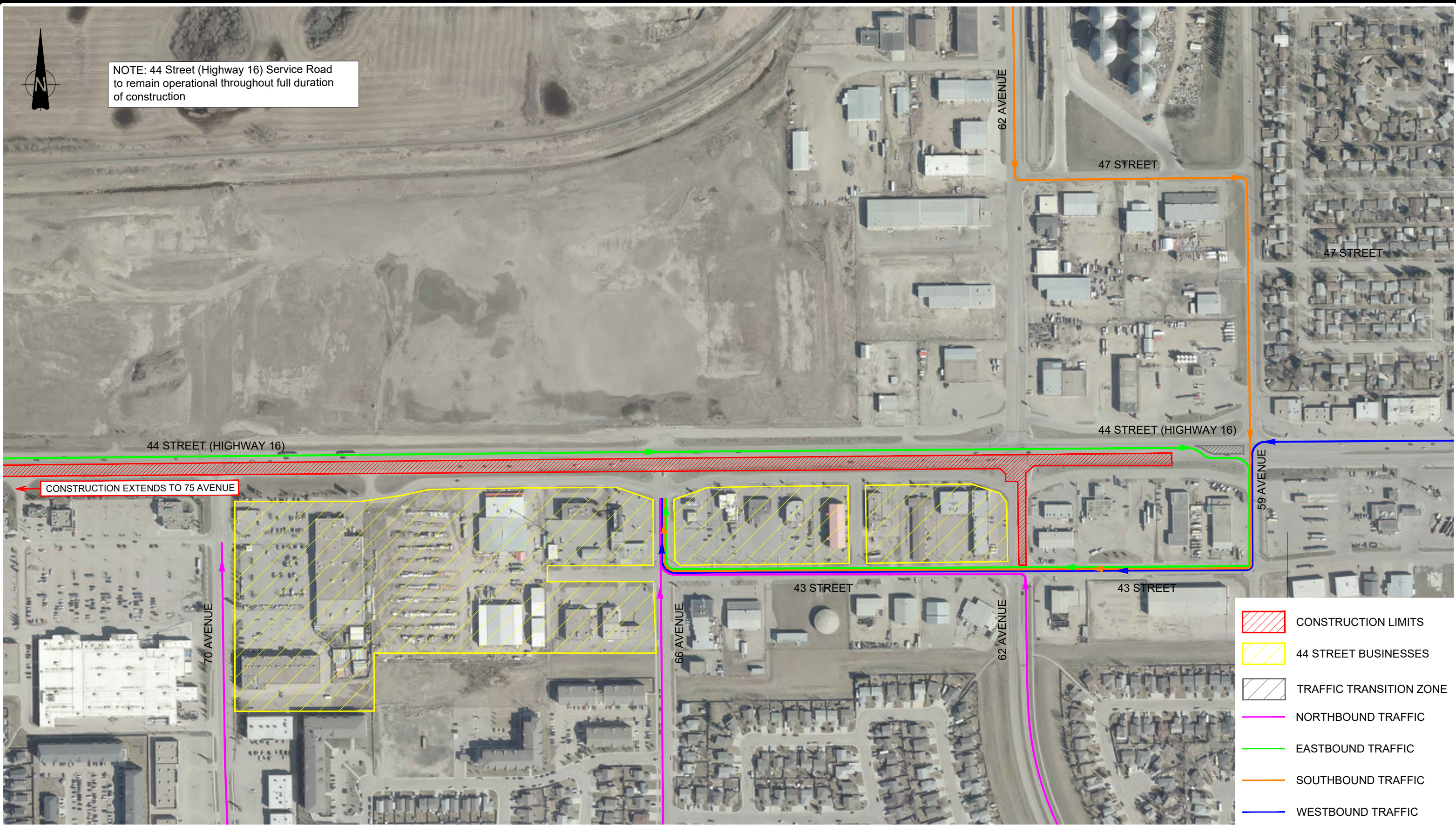











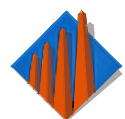
NOTE: 44 Street (Highway 16) Service Road to remain operational throughout full duration of construction

Drawing path: C:\Users\waguinad\OneDrive - City of Lloydminster\Projects\Current\20202004 - 44 Street Rehabilitation\1-Correspondence\3-Public Notices\Detour Plans\20210831 Phase 2 (EB Const)\Working files\44 Street South West.dwg Plotted: September 01, 2021 11:53:30 AM



-  CONSTRUCTION LIMITS
-  44 STREET BUSINESSES
-  TRAFFIC TRANSITION ZONE
-  NORTHBOUND TRAFFIC
-  EASTBOUND TRAFFIC
-  SOUTHBOUND TRAFFIC
-  WESTBOUND TRAFFIC

The City of Lloydminster



Business Detour Routes - Phase II Construction
6207 - 6609 44 Street, 4215 70 Avenue
Lloydminster, AB

Engineering

Drawn by:	WA
Date:	September 1, 2021
Drawing #:	MS-0037-21